

Test Report

No. **SH6105924/CHEM**

Date: Aug. 24, 2006

Page 1 of 3

NINGBO LG YONGXING CHEMICAL CO., LTD

66, HAITIAN ROAD, HOUHAITANG INDUSTRY ZONE, ZHENHAI, NINGBO, ZHEJIANG, CHINA

Report on the submitted sample said to be SAN RESIN.

SGS Ref No. : 10048535-3
Model : 80HF
Lot No : 68S243
Main Substance : SAN RESIN

Sample Receiving Date : Aug.21, 2006
Testing Period : Aug.21 – 24, 2006

Test Requested : 1) To determine the Cadmium Content in the submitted sample.
2) To determine the Lead Content in the submitted sample.
3) To determine the Mercury Content in the submitted sample.
4) To determine the Hexavalent Chromium Content on the submitted sample.
5) To determine the PBBs(Polybrominated biphenyls) PBBEs(PBDEs)
(Polybrominated biphenyl ethers) Content of the submitted sample.

Test Method : 1) With reference to BS EN 1122:2001, Method B, or other acid digestion.
Analysis was performed by Inductively Coupled Argon Plasma-Atomic Emission Spectrometry (ICP-AES) or Atomic Absorption Spectrometry.
2) With reference to EPA Method 3050B/ 3051/ 3052, or other acid digestion
Analysis was performed by Inductively Coupled Argon Plasma-Atomic Emission Spectrometry (ICP-AES) or Atomic Absorption Spectrometry.
3) With reference to US EPA 3052 or other acid digestion, Analysis was performed by Inductively Coupled Argon Plasma – Atomic Emission Spectrometry (ICP-AES) or US EPA7473 Analysis was performed by Hg Analyzer.
4) With reference to EPA Method 3060A & 7196A. The samples were alkaline digested by using EPA Method 3060A, and then analyzed by using Colorimetric method 7196A(by UV-Vis Spectrophotometer).
5) With reference to USEPA 8081A/8270D/3540C/3550C, Analysis was performed by GC-MS.

Test Results : Please refer to next page

Signed for and on behalf of
SGS-CSTC Chemical Laboratory



Ella Zhang
Sr. Section Head

Signed for and on behalf of
SGS-CSTC Chemical Laboratory



Sandy Hao
Lab Manager

Test Report

No. SH6105924/CHEM

Date: Aug. 24, 2006

Page 2 of 3

Test Results :

No.	Item	Unit	DL	A
1	Cadmium (Cd)	mg/kg	2	N.D.
2	Lead (Pb)	mg/kg	2	N.D.
3	Mercury (Hg)	mg/kg	2	N.D.
4	Hexavalent Chromium (Cr VI)	mg/kg	2	N.D.
5	Polybrominated biphenyls (PBBs)	---	---	---
	Monobromobiphenyl	mg/kg	5	N.D.
	Dibromobiphenyl	mg/kg	5	N.D.
	Tribromobiphenyl	mg/kg	5	N.D.
	Tetrabromobiphenyl	mg/kg	5	N.D.
	Pentabromobiphenyl	mg/kg	5	N.D.
	Hexabromobiphenyl	mg/kg	5	N.D.
	Heptabromobiphenyl	mg/kg	5	N.D.
	Octabromobiphenyl	mg/kg	5	N.D.
	Nonabromobiphenyl	mg/kg	5	N.D.
	Decabromobiphenyl	mg/kg	5	N.D.
	Polybrominated biphenyl ethers (PBBEs(PBDEs))	---	---	---
	Monobromobiphenyl ether	mg/kg	5	N.D.
	Dibromobiphenyl ether	mg/kg	5	N.D.
	Tribromobiphenyl ether	mg/kg	5	N.D.
	Tetrabromobiphenyl ether	mg/kg	5	N.D.
	Pentabromobiphenyl ether	mg/kg	5	N.D.
	Hexabromobiphenyl ether	mg/kg	5	N.D.
	Heptabromobiphenyl ether	mg/kg	5	N.D.
	Octabromobiphenyl ether	mg/kg	5	N.D.
	Nonabromobiphenyl ether	mg/kg	5	N.D.
	Decabromobiphenyl ether	mg/kg	5	N.D.

Sample Appearance Description(Photo see appendix):

A. Transparent plastic pellet

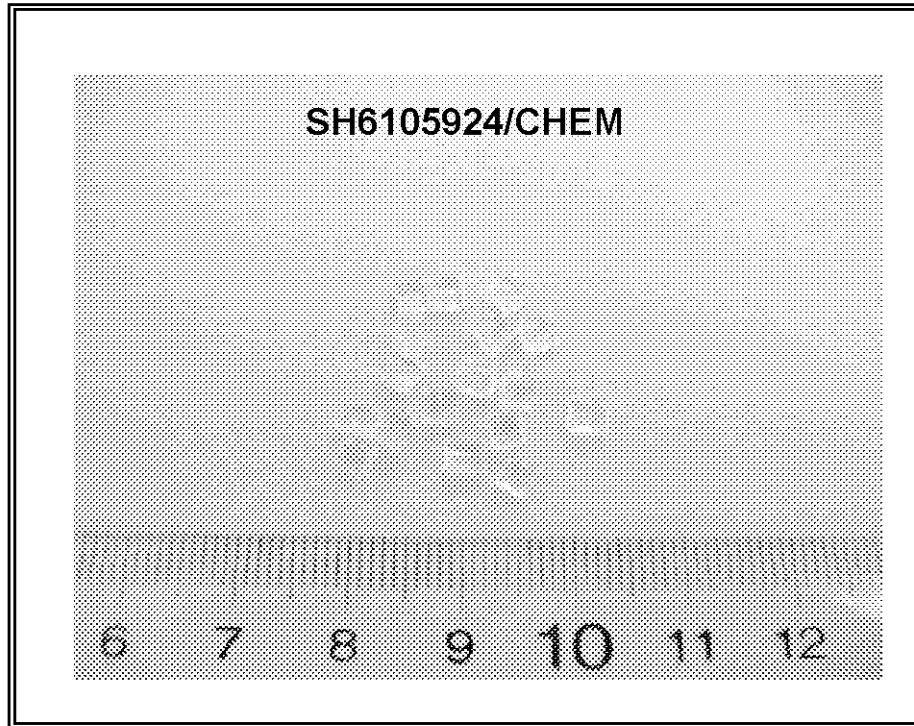
Note : 1mg/kg=1ppm=0.0001%

DL= Detection Limit

N.D. = Not detected

Not Detected is reported when the reading is less than detection limit value.

PHOTO APPENDIX



SGS authenticate the photo on original report only

*** End of Report ***